

SoClean Adapter for ResMed AirSense™ 10

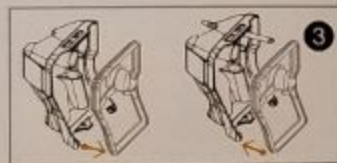
The adapter for the ResMed AirSense™ 10 is a special lid.

If you need help connecting your adapter, contact support at SoClean.
(See reverse for contact information.)

Connecting the Adapter

1. Detach the injection fitting and short hose from the main SoClean hose. You will no longer need the injection fitting and short hose. Save these parts in case you need them in the future.
2. Remove the original lid from the reservoir base by opening the lid fully, pushing one side of the hinge tab outward and freeing the lid from the base.
3. Lift the gasket from the original lid and transfer it to the new lid.
4. Install the new lid with the black injection hose to the reservoir base by inserting the left pin into the left notch. Pull the lid toward you and insert the right pin into the right notch.
5. If needed, refill your reservoir. Close the new lid and insert the reservoir into your CPAP unit like you normally would.
6. Connect the SoClean tube by pushing it onto the end of the port of the adapter lid. You are now ready to use the SoClean.

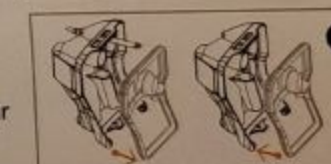
Adding water to your humidifier reservoir:
When you need to add water to your reservoir please remove the SoClean tube from the adapter lid and remove the reservoir from the CPAP machine. Add water and reinsert into the CPAP machine and then reconnect the SoClean hose. **WARNING:** hose must be attached to lid at all times when using.



SoClean Adapter for ResMed AirSense™ 10 ... Continued

Disconnecting the Adapter

1. Disconnect the SoClean tube from the port of the adapter lid.
2. Remove the reservoir from the CPAP machine.
3. Detach the adapter lid from the reservoir base by opening the lid fully, pushing one side of the hinge tab outward and freeing the lid from the base.
4. Lift the gasket from the adapter lid and transfer it to the original lid.
5. Connect the original lid to the reservoir base by inserting the left pin into the left notch. Pull lid toward you and insert the right pin into the right notch.
6. Close the lid and install the reservoir back into your AirSense 10.



 **Respshop**
better sleep, better life.

Important: If you need to disconnect the SoClean from your adapter, please reinstall the original humidifier lid onto your CPAP machine. If you fail to do this, the water in your humidifier will be pushed out through the hose and flooding will result. SoClean is not responsible for damage resulting from equipment mishandling.