

# RESMED

 RespShop

## Swift™FX

nasal pillows system

## User Guide

English

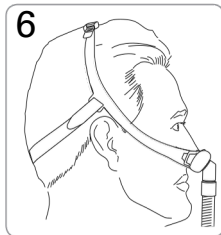
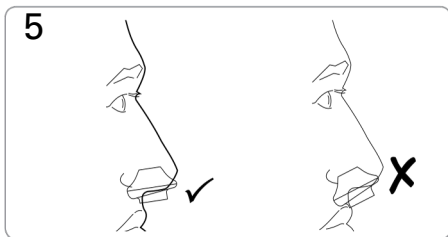
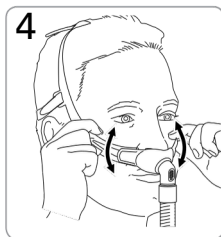
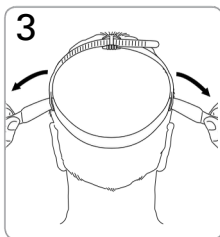
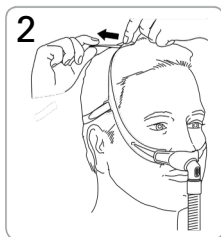


# RESMED

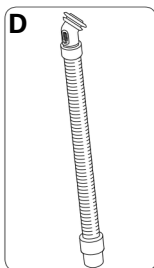
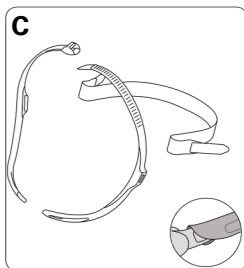
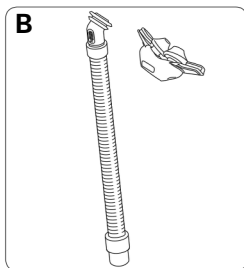
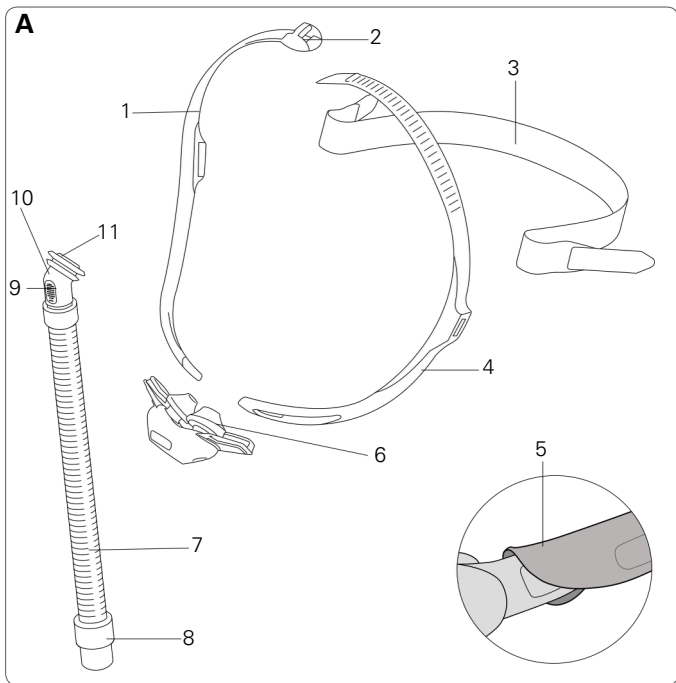
## Swift™FX

Fitting / Mise en place /  
Colocación / Colocação

Rx Only / Sur prescription  
uniquement / Solamente  
bajo prescripción / Somente  
com prescrição médica



# Swift FX



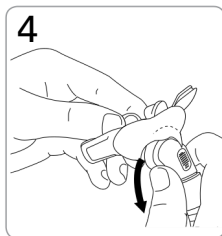
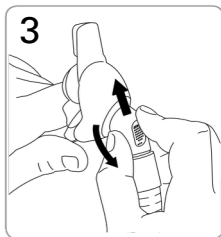
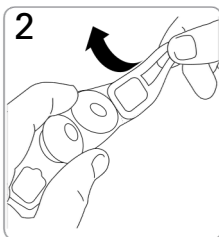
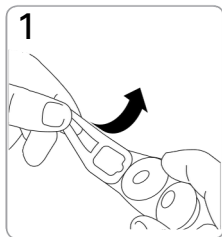
## Mask components / Composants du masque / Piezas de la mascarilla / Componentes da máscara

<i>Item / Article / Artículo / Item</i>	<i>Description / Description / Descripción / Descrição</i>	<i>Part number / Code produit / Número de parte / Código do produto</i>
1	Headgear right / Harnais droit / Arnés derecho / Lateral direita do arnés	—
2	Top buckle / Boucle supérieure / Hebilla superior / Fivela superior	—
3	Back strap / Sangle arrière / Correa posterior / Correia traseira	—
4	Headgear left / Harnais gauche / Arnés izquierdo / Lateral esquerda do arnés	—
5	Soft wraps / Housses souples / Fundas blandas / Envolvimentos macios	61530
6	Pillows / Coussins / Almohadillas / Almofadas	61521 (S) 61522 (M) 61523 (L)
7	Short tube / Tuyau court / Tubo corto / Tubo curto	—
8	Swivel / Pièce pivotante / Pieza giratoria / Peça giratória	—
9	Vent / Orifice de ventilation / Ventilación / Respiradouro	—
10	Elbow / Coude / Codo / Cotovelo	—
11	Swivel ring / Anneau pivotant / Aro de la pieza giratoria / Anel da peça giratória	—

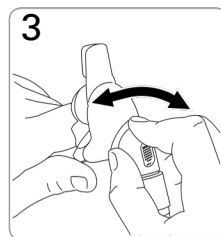
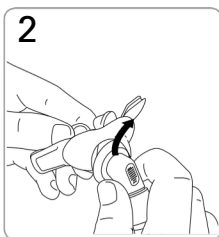
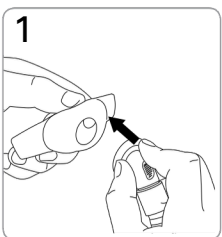
<i>Item / Article / Artículo / Item</i>	<i>Description / Description/ Descripción / Descrição</i>	<i>Part number / Code produit / Número de parte / Código do produto</i>
A	Complete system / Système complet / Sistema completo / Sistema completo	61500
B	Pillows system (Frame system) / Système coussins (Entourage rigide) / Sistema de almohadillas (Sistema de armazón) / Sistema de almofadas (Sistema de armação) Headgear assembly / Ensemble	61510 (XS) 61511 (S) 61512 (M) 61513 (L)
C	harnais / Conjunto del arnés / Conjunto do arnês	61529
D	Short tube assembly (Frame assembly) / Ensemble tuyau court (Ensemble entourage rigide) / Conjunto del tubo corto (Conjunto del armazón) / Conjunto do tubo curto (Conjunto da armação)	61528 (1) 61527 (10)
<i>Also available / Également disponible / Também está disponible / Também disponível</i>		
	Pillows / Coussins / Almohadillas / Almofadas	61520 (XS)

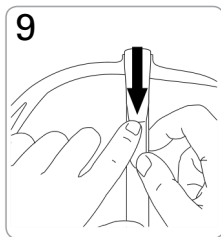
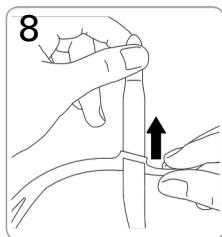
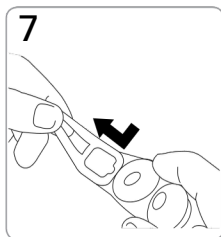
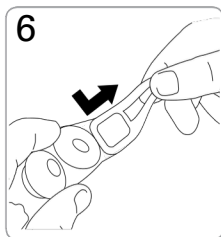
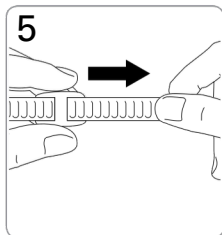
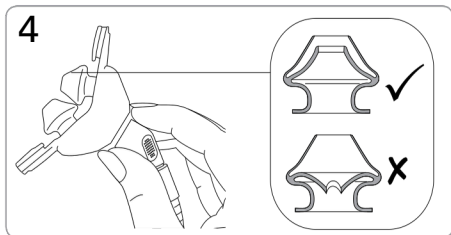
XS Extra Small / Très petit / Extra-pequena / Extra Pequeno(a),  
S Small / Petit / Pequeña / Pequeno(a),  
M Medium / Moyen / Mediana / Médio(a),  
L Large / Grand / Grande / Grande

## Disassembly / Démontage / Desmontaje / Desmontagem



## Reassembly / Remontage / Montaje / Remontagem





# Swift™FX

nasal pillows system

Thank you for choosing the Swift FX.

## Intended use

The Swift FX channels airflow noninvasively to a patient from a positive airway pressure (PAP) device such as a continuous positive airway pressure (CPAP) or bilevel system.

The Swift FX is:

- to be used by adult patients (> 66 lb/30 kg) for whom positive airway pressure has been prescribed
- intended for single-patient re-use in the home environment and multipatient re-use in the hospital/institutional environment.

## Using your mask

When using your mask with ResMed CPAP or bilevel devices that have mask setting options, refer to the Technical specifications section in this user guide for mask selection options.

For a full list of compatible devices for this mask, see the Mask/Device Compatibility List on [www.resmed.com](http://www.resmed.com) on the **Products** page under **Service & Support**. If you do not have internet access, please contact your ResMed representative.

### Notes:

- This mask is not compatible for use with ResMed AutoSet CS™2 and VPAP™Adapt SV devices.
- SmartStop may not operate effectively when using this mask with some CPAP or bilevel devices that have this feature.
- If you experience nasal dryness or irritation, use of a humidifier is recommended.

## **WARNING**

- *The vent holes must be kept clear.*
- *The mask should not be used unless the CPAP system is turned on and operating properly.*
- *Follow all precautions when using supplemental oxygen.*
- *Oxygen flow must be turned off when the CPAP or bilevel device is not operating, so that unused oxygen does not accumulate within the CPAP or bilevel device enclosure and create a risk of fire.*
- *At a fixed rate of supplemental oxygen flow, the inhaled oxygen concentration varies, depending on the pressure settings, patient breathing pattern, mask, point of application and leak rate.*
- *The technical specifications of the mask are provided for your clinician to check that they are compatible with the CPAP or bilevel device. If used outside specification or if used with incompatible devices, the seal and comfort of the mask may not be effective, optimum therapy may not be achieved, and leak, or variation in the rate of leak, may affect the CPAP or bilevel device function.*
- *Discontinue using this mask if you have ANY adverse reaction to the use of the mask, and consult your physician or sleep therapist.*
- *Using a mask may cause tooth, gum or jaw soreness or aggravate an existing dental condition. If symptoms occur, consult your physician or dentist.*
- *As with all masks, some rebreathing may occur at low CPAP pressures.*
- *Refer to your CPAP or bilevel device manual for details on settings and operational information.*
- *Remove all packaging before using the mask.*
-

## Cleaning your mask in the home

Your mask and headgear should only be handwashed by gently rubbing in warm (approximately 86°F/30°C) water using mild soap. All components should be rinsed well with drinking quality water and allowed to air dry out of direct sunlight.

### Daily/After each use:

- To optimize the mask seal, facial oils should be removed from the cushion after use.
- Handwash the separated mask components (excluding headgear).
- If the vent requires cleaning use a soft bristle brush.

### Weekly:

- Handwash the headgear. It may be washed without being disassembled.

## WARNING

*Do not use aromatic-based solutions or scented oils (eg, eucalyptus or essential oils), bleach, alcohol or products that smell strongly (eg, citrus) to clean any of the mask components. Residual vapours from these solutions can be inhaled if not rinsed thoroughly. They may also damage the mask, causing cracks.*

## CAUTION

- *If any visible deterioration of a system component is apparent (cracking, crazing, tears or cushion damage), the component should be discarded and replaced. Avoid*
- *connecting flexible PVC products (eg, PVC tubing) directly to any part of the mask. Flexible PVC contains elements that can be detrimental to the materials of the mask, and may cause the components to crack or break.*

## Reprocessing the mask between patients

This mask should be reprocessed when used between patients. Cleaning, disinfection and sterilization instructions are available from the ResMed website, [www.resmed.com/masks/sterilization/americas](http://www.resmed.com/masks/sterilization/americas). If you do not have internet access, please contact your ResMed representative.

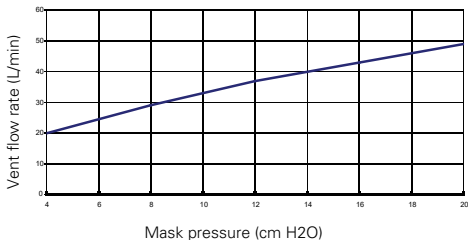
## Troubleshooting

<i>Problem / possible cause</i>	<i>Solution</i>
<i>Pillows won't seal properly, are uncomfortable or cause red marks</i>	
Pillows may have been fitted incorrectly, adjusted incorrectly or the headgear is too tight.	Check that the ResMed logo on top of the pillows is facing outwards. Carefully follow the fitting instructions. Readjust the headgear to ensure it is not over tightened.
Inner wall position of one or both pillows is incorrect.	Squeeze pillow sides to release inner wall. The correct position is shown in the reassembly instructions.
Pillows are the wrong size.	Talk to your clinician.
Pillows may be dirty.	Clean pillows according to the instructions.
<i>Mask is too noisy</i>	
System is assembled incorrectly.	Disassemble the mask, then reassemble according to the instructions.
System is leaking air.	Refit or reposition you mask. Adjust your headgear. Check your mask is assembled correctly.
Vent is blocked or partially blocked.	If the vent requires cleaning, use a soft bristle brush.

## Technical specifications

### Pressure-flow curve

The mask contains passive venting to protect against rebreathing. As a result of manufacturing variations, the vent flow rate may vary.



Pressure (cm H <sub>2</sub> O)	Flow (L/min)
4	8 20 29
12	37 43
16	49
20	

### Dead space information

Physical dead space is the empty volume of the mask to the end of the swivel. Using the large cushions it is 106 mL.

### Therapy pressure

4 to 20 cm H<sub>2</sub>O

### Resistance

Drop in pressure measured (nominal)  
at 50 L/min: 0.4 cm H<sub>2</sub>O  
at 100 L/min: 1.4 cm H<sub>2</sub>O

### Environmental conditions

Operating temperature: +41°F to 104°F  
(+5°C to +40°C)  
Operating humidity: 15% to 95% relative humidity  
non-condensing  
Storage and transport temperature: -4°F to 140°F  
(-20°C to +60°C)  
Storage and transport humidity: up to 95% relative  
humidity non-condensing

### Gross dimensions

Large: 16.34" (H) x 3.70" (W) x 1.77" (D)  
(415 mm (H) x 94 mm (W) x 45mm (D))  
Mask fully assembled with short tube assembly – no  
headgear.

### Mask setting options

**For S9:** Select 'Pillows'

**For other devices:** Select 'SWIFT', (if available),  
otherwise select 'MIRAGE' as the mask option.

## Notes:

- The mask system does not contain latex, PVC or DEHP materials.
- The manufacturer reserves the right to change these specifications without notice.










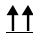

## Storage

Ensure that the mask is thoroughly clean and dry before storing it for any length of time. Store the mask in a dry place out of direct sunlight.

## Disposal

This mask does not contain any hazardous substances and may be disposed of with your normal household refuse.

## Symbols

 Caution, consult accompanying documents;  Lot number;  Part number;  Temperature limitation;  Humidity limitation;  Does not contain latex;  Manufacturer;  Indicates a Warning or Caution and alerts you to a possible injury or explains special measures for the safe and effective use of the device;  Keep away from rain;  This way up;  Fragile, handle with care.

## Limited warranty

ResMed Ltd (hereafter 'ResMed') warrants that your ResMed mask system (including mask frame, cushion, headgear and tubing) shall be free from defects in material and workmanship from the date of purchase for the period of 90 days or in the case of disposable masks the maximum use period.

This warranty is only available to the initial consumer. It is not transferable.

If the product fails under conditions of normal use, ResMed will repair or replace, at its option, the defective product or any of its components.

This limited warranty does not cover: a) any damage caused as a result of improper use, abuse, modification or alteration of the product; b) repairs carried out by any service organization that has not been expressly authorized by ResMed to perform such repairs; and c) any damage or contamination due to cigarette, pipe, cigar or other smoke. Warranty is void on product sold, or resold, outside the region of original purchase.

Warranty claims on defective product must be made by the initial consumer at the point of purchase.

This warranty replaces all other expressed or implied warranties, including any implied warranty of merchantability or fitness for a particular purpose. Some regions or states do not allow limitations on how long an implied warranty lasts, so the above limitation may not apply to you.

ResMed shall not be responsible for any incidental or consequential damages claimed to have resulted from the sale, installation or use of any ResMed product. Some regions or states do not allow the exclusion or limitation of incidental or consequential damages, so the above limitation may not apply to you.

This warranty gives you specific legal rights, and you may also have other rights which vary from region to region. For further information on your warranty rights, contact your local ResMed dealer or ResMed office.

**Manufacturer:**

ResMed Ltd 1 Elizabeth Macarthur Drive Bella Vista NSW 2153 Australia.

**Distributed by**

ResMed Corp 9001 Spectrum Center Boulevard San Diego CA 92123 USA.

ResMed (UK) Ltd 96 Milton Park Abingdon Oxfordshire OX14 4RY UK.

See [www.resmed.com](http://www.resmed.com) for other ResMed locations worldwide.

Swift FX

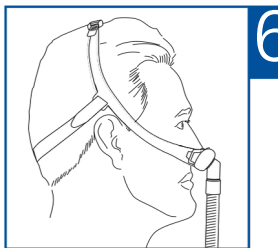
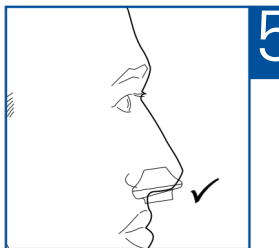
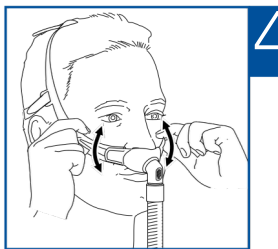
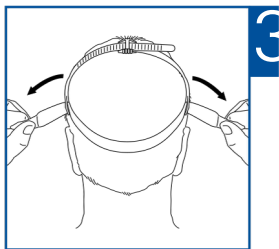
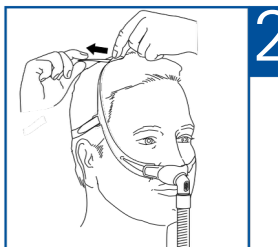
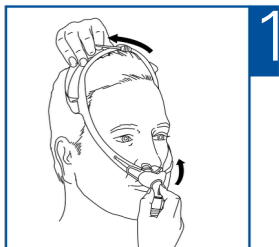
Protected by patents: AU 785376, HK 1057714, EP 1314445, EP 1582230, JP 43

US 6581594, US 6823865, US 7159587. Other patents pending.

Protected by design registration: US D562976. Others designs pending.

Swift is a trademark of ResMed Ltd and Swift is registered in U.S. Patent and Trademark Office.

© 2010 ResMed Ltd.



608259/2 10 04

SWIFT FX

USER

**AMER - ENG**



6 0 8 2 5 9