

PHILIPS

DreamStation 2

Auto CPAP Advanced

Introducing
DreamStation 2
AutoCPAPAdvanced
Success. By design.



Evolving to a new way of doing business

The business of treating patients for obstructive sleep apnea (OSA) can seem complex. Recent changes to our daily lives will become the standard moving forward.

Philips DreamStation 2 Auto CPAP Advanced, our next clinically proven evolution in integrated sleep therapy solutions, is designed to help you succeed by supporting you to treat patients effectively and efficiently across the OSA journey.

Improvements include simplified setup and training as well as new features designed to increase comfort, drive adherence and enhance efficiencies in patient management.

The OSA Journey



Philips DreamStation 2 Auto CPAP Advanced Success. By design.

Simplified.
Intuitive.
Connected.



DreamStation 2 Auto CPAP Advanced is designed to help you and your patients succeed...together.



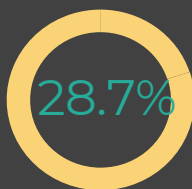
Patient setup and training

Efficient setup: Flexibility in the setup process allows you to choose what is best for your business.

1. Out-of-the-box, no-touch setup²
 - Accept data-driven defaults
 - Personalize remotely with Care Orchestrator
2. Streamlined, low-touch, first-ever guided setup on the device

Simplified training: The CPAP features intuitive navigation of comfort features and settings, along with easy handling of the device.

Precision mask fitting: Philips Respironics Mask Selector uses no-touch scanning technology for the right mask fit from the start.³



RTs set up DreamStation 2 Auto CPAP Advanced 28.7% faster than DreamStation on first try.⁴

To learn more, visit philips.com/dreamstation-2



Initiation

Three easy-to-access comfort settings: Live adjustments of Ramp Plus, humidification and heated tube temperature while therapy is running are included.

- Ramp Plus allows patients to set a comfortable starting pressure for falling asleep, which may also help reduce callbacks and adjustments to minimum pressure prescriptions.

Micro-flexible 12mm heated tube: Philips smallest-diameter tubing is designed to be comfortable while taking up less space than traditional tubing.

Smart auto and advanced algorithms: Proprietary algorithms automatically adjust pressure to provide personalized therapy and treat AHIs at lower pressures.⁵



Ongoing compliance

Enhanced connectivity: Integrated cell modem with automatic Bluetooth pairing enables remote setup and easy access to data for both your care team and your patients.

- On-demand prescription changes
- Remote troubleshooting through Performance Check

Philips Care Orchestrator: Drive collaboration among your team with patient insights delivered straight to smartphones, tablets or PCs.

- Adherence Profiler enables you to get notifications if a patient is at risk of noncompliance in a 90-day period.



DreamMapper app keeps patients engaged with easy access to coaching to drive ongoing compliance.

Patients struggling with adherence to sleep therapy have a 283% higher success rate.⁶

To learn more, visit philips.com/dreamstation-2

Introducing DreamStation 2 Auto CPAP Advanced



22% smaller **16% lighter**

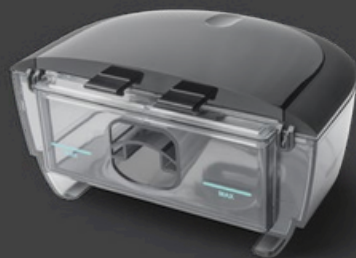
than a leading competitor

29% smaller than
DreamStation1

than a leading competitor

2.5% lighter than DreamStation
(with power supply included)

Device components



Water tank
with lid



Reusable
pollen filter



Ultrafine
pollen filter

Ordering information

DreamStation 2 Auto CPAP Advanced part numbers

PN	PN description
DSX520H11C	DreamStation 2 Auto CPAP Advanced + Humidifier with cell/BT
DSX520T11C	DreamStation 2 Auto CPAP Advanced + Humidifier/Heated Tube with cell/BT

DreamStation 2 accessories

PN	PN description
1146072	DS2 Humidifier Water Tank no Lid, RP DS2
1146073	Humidifier Lid only, RP DS2 Inlet/Outlet
1142836	Seal, RP DS2 Water Tank with Lid DS2
1142832	Reusable Pollen Filter, RP DS2 Disposable
1142687	Ultra-Fine Filter, RP DS2 Disposable Ultra-
1142828	Fine Filter, RP DS2 Disposable Ultra-Fine
1142829	Filter, RP 3150 BLE Wrist Ox Soft Reusable
1142831	Finger Sensor, WristOx, SM Soft Reusable
1144877	Finger Sensor, WristOx, M Soft Reusable
1147077	Finger Sensor, WristOx, L PC USB
1147178	Interface Cable, WristOx 3150 BLE DS2
1147179	Carrying Case DreamStation 2 Roll Stand
1147180	
1142834	
1145156	

DreamStation/ DreamStation 2 Auto CPAP Advanced accessories

PN	PN description
HT15	15 mm Heated Tube
PR15	15 mm Standard Tube
PR12	12 mm Micro-Flexible Tube
HT12	12 mm Micro-Flexible Heated Tube
1032907	22 mm Performance Tube
1147466	12 mm Tube Device Adapter with OIS
1145085	Philips RI SD Card, 1 pack
1063859	Philips RI SD Cards, 10 pack
1120746	EN: Shielded DC Cord - DreamStation
1120747	EN: Shielded DC Cord System - DreamStation
1144267	Philips 80W CPAP Power Supply
1005894	Power Cord with C7 END-USA/CAN
532209	DC Battery Adapter Cable
1124009	PAP Lithium Ion Battery Kit
1121736	Lithium Ion Battery, PAP Device Cable
1126947	Lithium Ion Battery Case
342077	Bacteria Filter
302418	Pressure Valve
312710	O2 Enrichment Attachment

References: 1. Gagnadoux F, Pevernagie D, Jennum P, Lon N, Loiodice C, Tamisier R, van Mierlo P, Trzepizur W, Neddermann M, Machleit A, Jasko J, Pépin JL. Validation of the System One RemStar Auto A-Flex for Obstructive Sleep Apnea Treatment and Detection of Residual Apnea-Hypopnea Index: A European Randomized Trial. *J Clin Sleep Med.* 2017 Feb 15;13(2):283-290. doi: 10.5664/jcs.m.6464. PMID: 27784415; PMCID: PMC5263084. Kushida CA, Berry RB, Blau A, Crabtree T, Fietze I, Kryger MH, Kuna ST, Pegram GV Jr, Penzel T. Positive airway pressure initiation: a randomized controlled trial to assess the impact of therapy mode and titration process on efficacy, adherence, and outcomes. *Sleep.* 2011 Aug 1;34(8):1083-92. doi: 10.5665/SLEEP.1166. PMID: 21804670; PMCID: PMC3138163. 2. Assumes acceptance of smart, default settings. Alternatively, you can set up prescriptions entirely via CO with no device touch. 3. Data analysis after 90 days of use. 2019 Philips sponsored patient preference trial (n=310). Patient scanned using the Mask Selector (n=153) vs. Traditional fitting methods (n=157). 4. Philips randomized usability trial. Ease-of-Set Up and Time-to-Set Up of Continuous Positive Airway Pressure (CPAP) Devices; evaluating the user interface with 27 respiratory therapists that typically set up Philips DreamStation and ResMed AirSense 10 CPAP devices. 2020. 5. Hertegonne KB, Rombaut B, Houtmeyers P, Van Maele G, Pevernagie DA. Titration efficacy of two auto-adjustable continuous positive airway pressure devices using different flow limitation-based algorithms. *Respiration.* 2008;75(1):48-54. doi: 10.1159/000103515. Epub 2007 Jun 1. PMID: 17541262. Nolan GM, Ryan S, O'Connor TM, McNicholas WT. Comparison of three auto-adjusting positive pressure devices in patients with sleep apnoea. *Eur Respir J.* 2006 Jul;28(1):159-64. doi: 10.1183/09031936.06.00127205. Epub 2006 Mar 29. PMID: 16571610 Nieves Navarro Soriano, Mikel Azpiazu Blocona, Javier Carrillo Hernández-Rubio, Raquel Cobos Campos, Ainhoa Alvarez Ruiz de Larrinaga, Bereniç Murià Diaz David Diez Fuente, Carlos Javier Egea Santaolalla. The Effective Pressure of the CPAP Titration Depends on the APAP Device Used. Poster at SEPAR Convention (Spain). May 2018. Javier Carrillo Hernandez-Rubio, Mikel Azpiazu Blocona, David Diez Fuente, Nieves Berlen Navarro Soriano, Laura Cancelo Diaz, Lourdes Guerra Martin, Raquel Cobos Campos, Carlos Javier Egea Santaolalla. Validity of the CPAP Automatic Titration in our Sleep Unit. Poster at SEPAR Convention (Spain). May 2018. 6. 46% of DreamMapper patients went on to achieve adequate adherence within 90 days versus 12% for the Standard Care group, a relative increase of 283.33%. In a retrospective review conducted by Philips Respironics of the EncoreAnywhere database (white paper) of struggling patients (n=24,176).

Caution: Federal law restricts this device to sale by or on the order of a physician.

©2021 Koninklijke Philips N.V. All rights reserved. Specifications are subject to change without notice. Trademarks are the property of Koninklijke Philips N.V. or their respective owners.



philips.com/dreamstation-2
edoc JB2/11/21MCI4110705v00

1010 Murry Ridge Lane, Murrysville, PA 15668
800 313 0984