

Drivers InstallInstructions

Prior to installing the driver make sure thatthe CPAP is unplugged from the computer

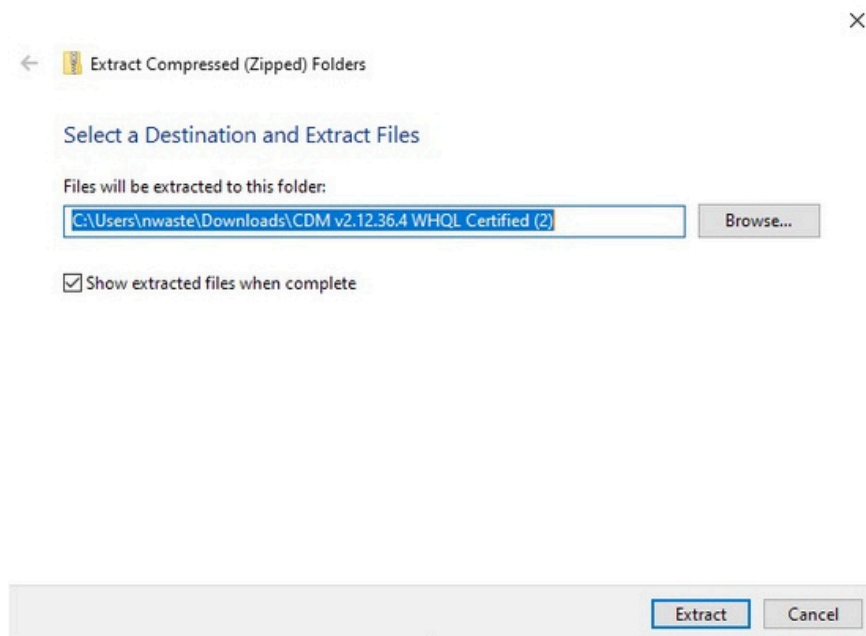
1. You will only need to do these steps, if the boxes do not become colored when plugging in your CPAP
2. Click [HERE](#) to download the drivers
3. Go to your downloads folder and double click on the file



4. Click Extract All



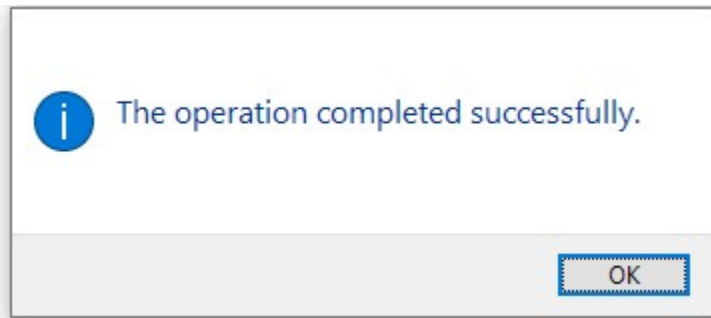
5. Leave the default folder and click extract



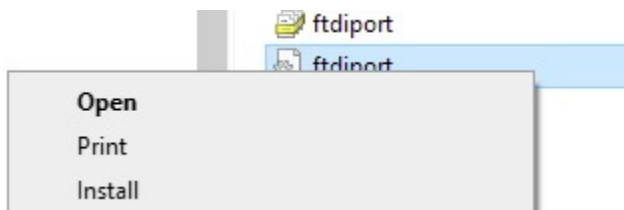
6. Find the file called *ftdibus*, there are 2 of them. One will have an icon of a piece of paper with a gear. Right click on it and choose *Install* from the menu.



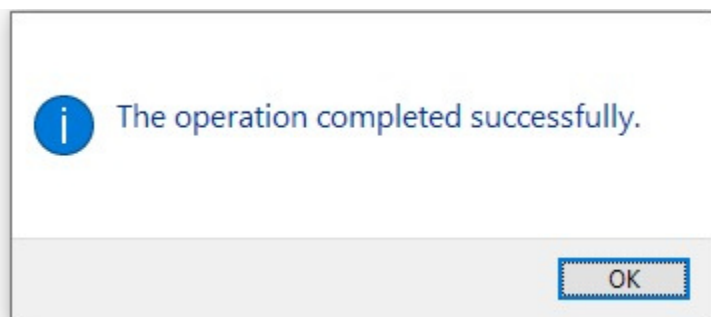
7. You will get a pop up that the operation completed successfully.



8. Find the file called *ftdiport*, there are 2 of them. One will have an icon of a piece of paper with a gear. Right click on it and choose *Install* from the menu.



9. You will get a pop up that the operation completed successfully.



10. Reset the computer, open the MiniCPAP software and plug in the device